

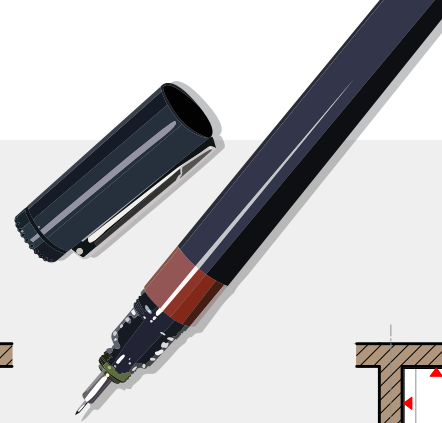
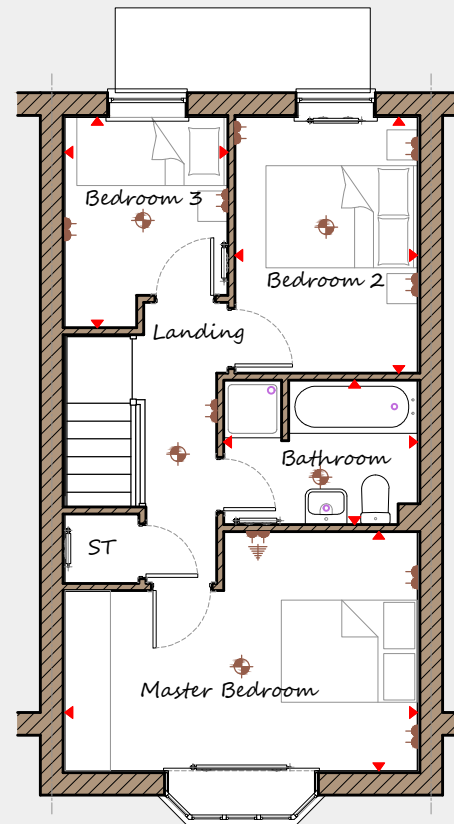
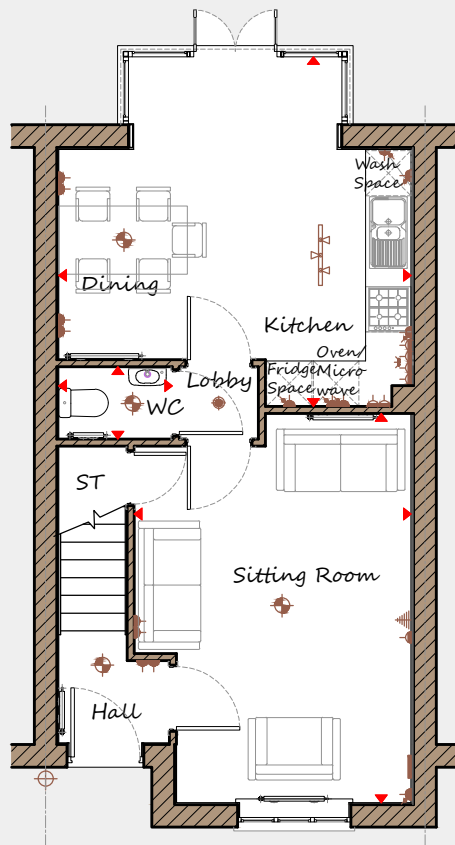


DAVIDSONS
HOMES

THE MOORE
3 BEDROOM
MID-TERRACE
HOME

An exclusive opportunity to own
a desirable new property that
provides comfortable living with
craftsmanship of the highest calibre.

DH346BI-4
[905]
Rev C02



DAVIDSONS
HOMES

THE MOORE
FLOOR PLANS

Ground Floor

Sitting Room	3660	x	5145	12'0"	x	16'11"
Kitchen/Dining	4660	x	4625	15'3"	x	15'2"
WC	1505	x	995	4'11"	x	3'2"

First Floor

Master Bedroom	4660	x	3165	15'3"	x	10'5"
Ensuite	2410	x	3385	7'11"	x	11'1"
Bedroom 2	2115	x	2785	7'1"	x	9'2"
Bedroom 3	2560	x	1905	8'5"	x	6'3"

Key

Dimension location	External light	Ceiling light	Downlight
3 bar light	Radiator	TV aerial	Media plate
Double socket	High double socket	Low socket	High socket

This is an artistic interpretation, variations in elevational styles, finishes and floor plans may vary. Please consult with your Sales Manager for details of the development and plot. Measurements provided are within + or - 50mm.



Davidsons Homes.
Wilson House, Leicester Road,
Ibstock, Leicestershire, LE67 6HP
T: 01530 261 444
www.davidsonsgroup.co.uk