



DAVIDSONS
HOMES

The
Dudley
DH200VE-5



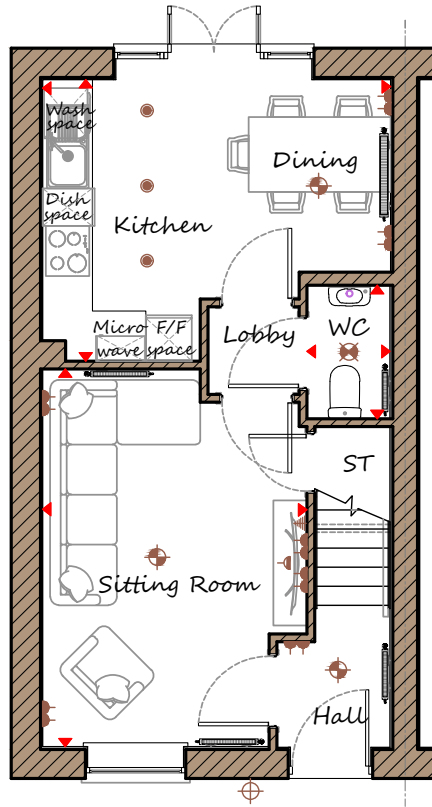
TWO BEDROOM
SEMI-DETACHED
HOME



728 sq'ft

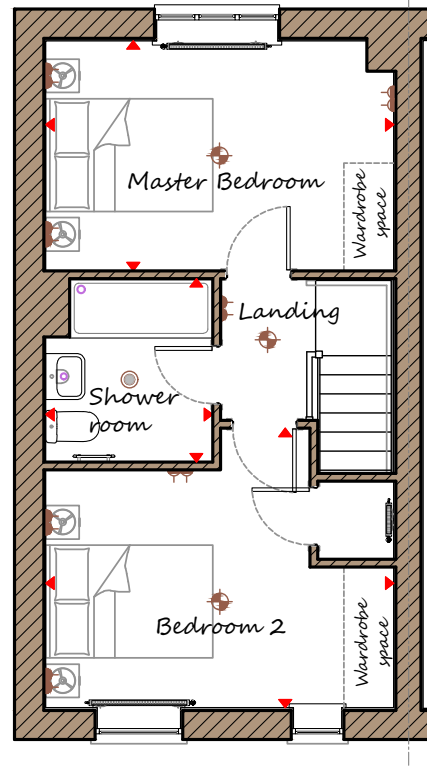
An exclusive opportunity
to own a desirable new property
that provides comfortable
living with craftsmanship of
the highest calibre.

www.davidsonshomes.co.uk



Ground Floor

Sitting Room	3165	x	4530	10'5"	x	14'10"
Kitchen/Dining	4170	x	3375	13'8"	x	11'1"
WC	995	x	1600	3'3"	x	5'3"



First Floor

Master Bedroom	4170	x	2755	13'8"	x	9'0"
Bedroom 2	4170	x	3350	13'8"	x	11'0"
Bathroom	2000	x	2200	6'7"	x	7'3"



REV C03

Key

- Dimension location
- External light
- Pendant light
- Batten light
- Surface light
- Downlight
- 3 spot bar light
- Double socket
- High double socket
- High socket
- Radiator
- Towel Radiator
- TV aerial



Note to customers. Information shown change at any time. Alterations and variations may occur during the build process. As such the design and dimensions may differ from what is shown. Dimensions should not be used for carpet or flooring sizes or items of furniture. Whilst we make every effort to ensure our information is kept up-to-date, there may be a delay in updating the drawing due to changes in Building Regulations / Planning / Sales Specification. Home purchasers are advised to check with the Sales Manager whether any alterations have been made. Computer generated image of the home is an artistic interpretation, variations in materials may differ from plot to plot such as brick finishes, render, roof tile colours, and paint finishes. Chimney's shown are plot specific, refer to development layout for homes with chimneys. Homes may be handed versions of the computer generated image. Company No: 4346861 | Davidsons Homes | Registered Office: Fishers Solicitors, Unit R Ivanhoe Business Park, Ashby de la Zouch, Leicestershire, LE65 2AB