



DAVIDSONS
HOMES

The
Bywell
DH328B-5



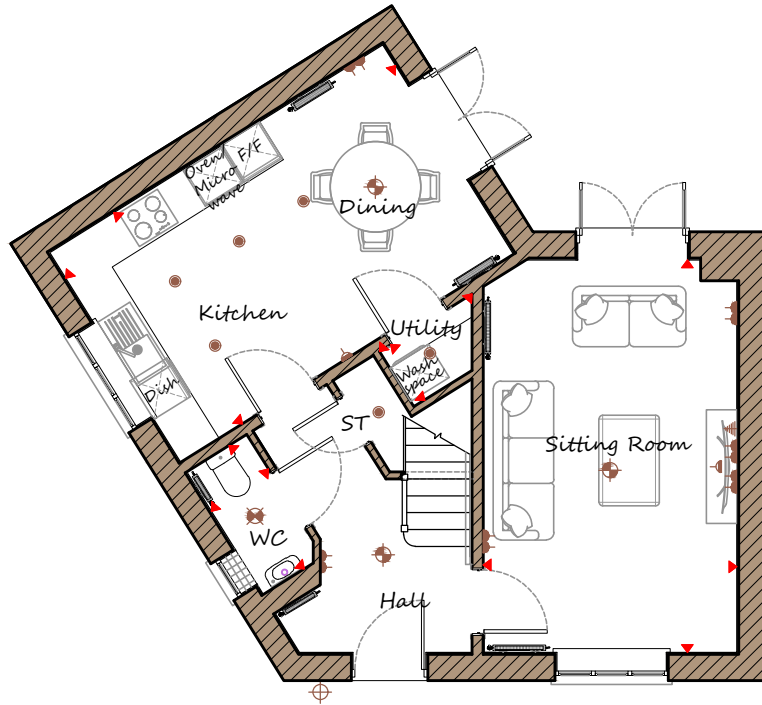
THREE BEDROOM
DETACHED
HOME



1036 sq'ft

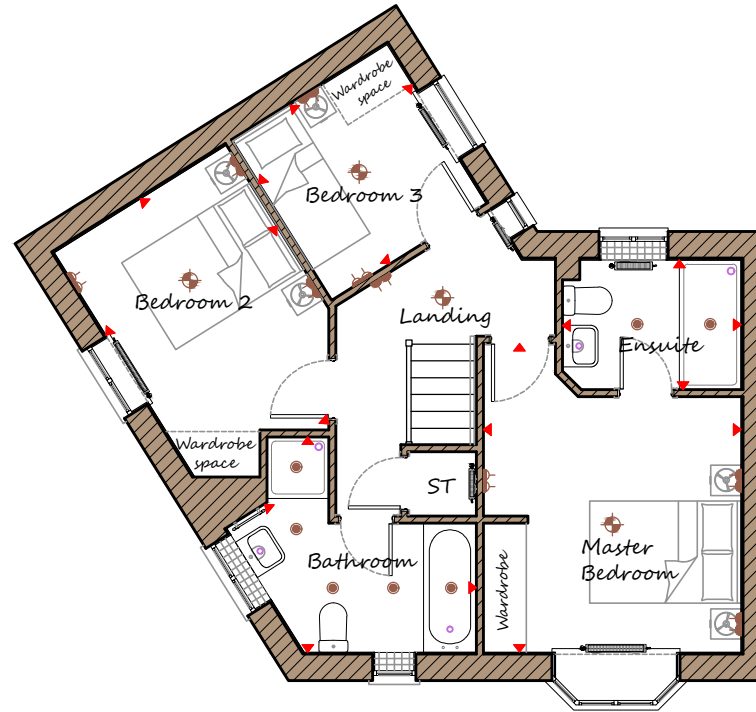
An exclusive opportunity
to own a desirable new property
that provides comfortable
living with craftsmanship of
the highest calibre.

www.davidsonshomes.co.uk



Ground Floor

Sitting Room	3350	x	5190	11'0"	x	17'0"
Kitchen/Dining	3270	x	5190	10'9"	x	17'0"
Utility	860	x	1445	2'10"	x	4'9"
WC	940	x	1910	3'1"	x	6'3"



First Floor

Master Bedroom	3405	x	4085	11'2"	x	13'5"
Ensuite	2360	x	1715	7'9"	x	5'8"
Bedroom 2	3880	x	2685	12'9"	x	8'10"
Bedroom 3	2480	x	2410	8'2"	x	7'11"
Bathroom	3200	x	2850	10'6"	x	9'4"



2 Double Bedrooms



French doors lead to rear garden



Designer Sanitaryware



Ideal family home

REV C01

Key	Dimension location	External light	Pendant light	Batten light	Surface light	Downlight	3 spot bar light
	Double socket	High double socket	High socket	Radiator	Towel Radiator	TV aerial	

Note to customers. Information shown change at any time. Alterations and variations may occur during the build process. As such the design and dimensions may differ from what is shown. Dimensions should not be used for carpet or flooring sizes or items of furniture. Whilst we make every effort to ensure our information is kept up-to-date, there may be a delay in updating the drawing due to changes in Building Regulations / Planning / Sales Specification. Home purchasers are advised to check with the Sales Manager whether any alterations have been made. Computer generated image of the home is an artistic interpretation, variations in materials may differ from plot to plot such as brick finishes, render, roof tile colours, and paint finishes. Chimney's shown are plot specific, refer to development layout for homes with chimneys. Homes may be handed versions of the computer generated image. Company No: 4346861 | Davidsons Homes | Registered Office: Fishers Solicitors, Unit R Ivanhoe Business Park, Ashby de la Zouch, Leicestershire, LE65 2AB

