

# THE Alford

5<sup>TH</sup> EDITION



DAVIDSONS  
HOMES

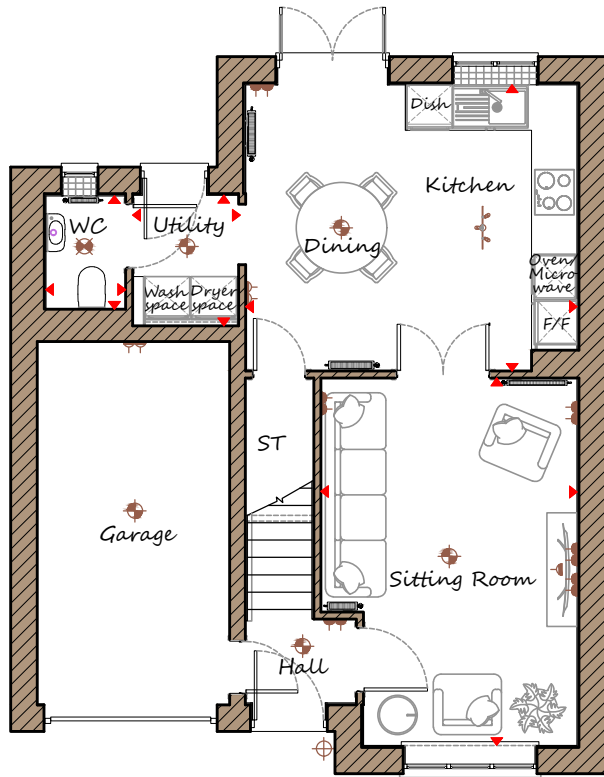


THREE BEDROOM  
DETACHED HOME

1001 sq'ft

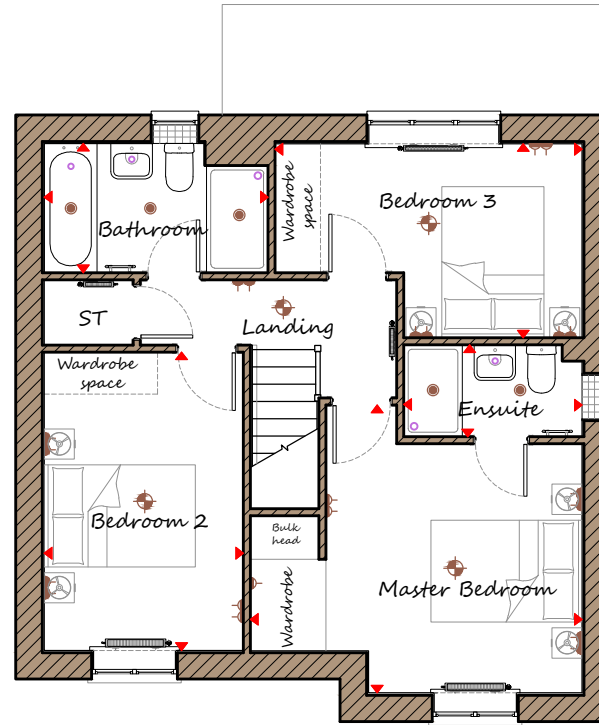
An exclusive opportunity  
to own a desirable new property  
that provides comfortable  
living with craftsmanship of  
the highest calibre.

[www.davidsonshomes.co.uk](http://www.davidsonshomes.co.uk)



### Ground Floor

Sitting Room	3390	x	4855	11'1"	x	15'11"
Kitchen/Dining	4380	x	3785	14'5"	x	12'5"
Utility	1405	x	1725	4'7"	x	5'8"
WC	1055	x	1500	3'6"	x	4'11"



### First Floor

Master Bedroom	4385	x	3810	14'5"	x	12'6"
Ensuite	2360	x	1215	7'9"	x	4'0"
Bedroom 2	2635	x	3945	8'8"	x	12'11"
Bedroom 3	4060	x	2570	13'4"	x	8'5"
Bathroom	2960	x	1710	9'9"	x	5'7"

  
3 Double Bedrooms

  
French doors lead to rear garden

  
Utility Room

  
Ideal family home

DH330V-5 REV C01

**Key**

Dimension location 	External light 	Pendant light 	Batten light 	Surface light 	Downlight 
3 spot bar light 	Double socket 	High double socket 	High socket 	Radiator 	Towel Radiator 

**CONSUMER CODE FOR HOME BUILDERS**

**NEW HOMES QUALITY CODE**

**NEW HOMES OMBUDSMAN SERVICE**

Note to customers. Information shown change at any time. Alterations and variations may occur during the build process. As such the design and dimensions may differ from what is shown. Dimensions should not be used for carpet or flooring sizes or items of furniture. Whilst we make every effort to ensure our information is kept up-to-date, there may be a delay in updating the drawing due to changes in Building Regulations / Planning / Sales Specification. Home purchasers are advised to check with the Sales Manager whether any alterations have been made. Computer generated image of the home is an artistic interpretation, variations in materials may differ from plot to plot such as brick finishes, render, roof tile colours, and paint finishes. Chimney's shown are plot specific, refer to development layout for homes with chimneys. Homes may be handed versions of the computer generated image. Company No: 4346861 | Davidsons Homes | Registered Office: Fishers Solicitors, Unit R Ivanhoe Business Park, Ashby de la Zouch, Leicestershire, LE65 2AB