

THE Moreley

5TH EDITION



DAVIDSONS
HOMES



THREE BEDROOM
DETACHED HOME

1058 sq'ft

An exclusive opportunity
to own a desirable new property
that provides comfortable
living with craftsmanship of
the highest calibre.

www.davidsonshomes.co.uk



3 Double Bedrooms



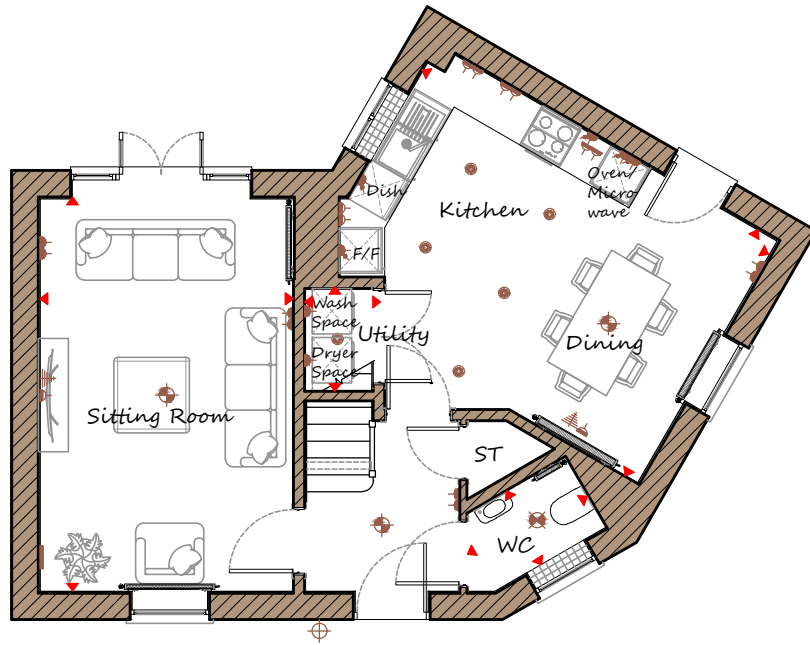
French doors lead to rear garden



Designer Sanitaryware

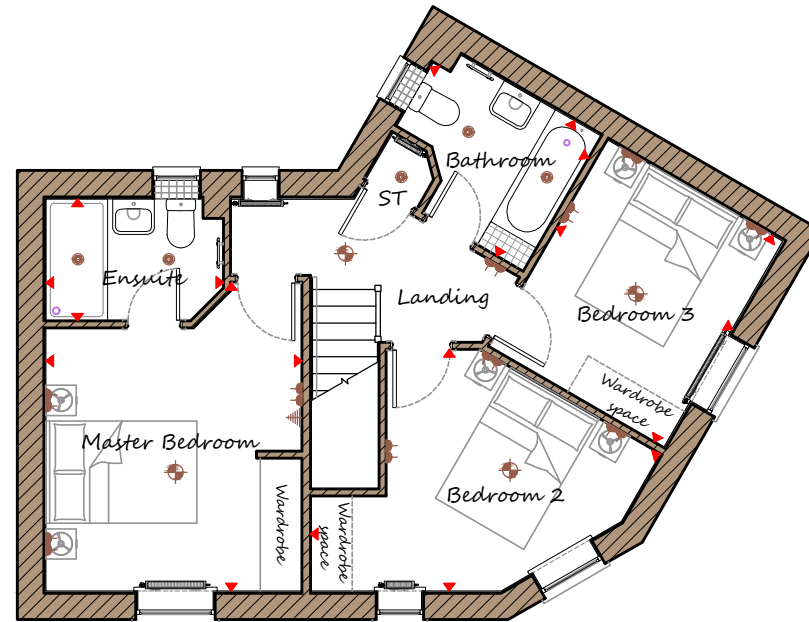


Ideal for first time buyers!



Ground Floor

Sitting Room	3350	x	5190	11'0"	x	17'0"
Kitchen/Dining	3700	x	5190	12'2"	x	17'0"
Utility	905	x	1360	3'0"	x	4'6"
WC	1110	x	1330	3'8"	x	4'4"



First Floor

Master Bedroom	3385	x	4080	11'1"	x	13'5"
Ensuite	2350	x	1615	7'9"	x	5'4"
Bedroom 2	4750	x	3195	15'7"	x	10'6"
Bedroom 3	3150	x	2680	10'4"	x	8'10"
Bathroom	2060	x	2410	6'9"	x	7'11"

DH342G-5 REV P00

Key

- Dimension location
- External light
- Ceiling light
- Downlight
- 3 bar light
- Radiator
- Double socket
- High double socket
- Low socket
- High socket
- TV aerial
- Media plate

CONSUMER CODE FOR HOME BUILDERS



Note to customers. Information shown change at any time. Alterations and variations may occur during the build process. As such the design and dimensions may differ from what is shown. Dimensions should not be used for carpet or flooring sizes or items of furniture. Whilst we make every effort to ensure our information is kept up-to-date, there may be a delay in updating the drawing due to changes in Building Regulations / Planning / Sales Specification. Home purchasers are advised to check with the Sales Manager whether any alterations have been made. Computer generated image of the home is an artistic interpretation, variations in materials may differ from plot to plot such as brick finishes, render, roof tile colours, and paint finishes. Chimney's shown are plot specific, refer to development layout for homes with chimneys. Homes may be handed versions of the computer generated image. Company No: 4346861 | Davidsons Homes | Registered Office: Fishers Solicitors, Unit R Ivanhoe Business Park, Ashby de la Zouch, Leicestershire, LE65 2AB