



DAVIDSONS
HOMES

THE
WHITTINGTON
4 BEDROOM
DETACHED
HOME

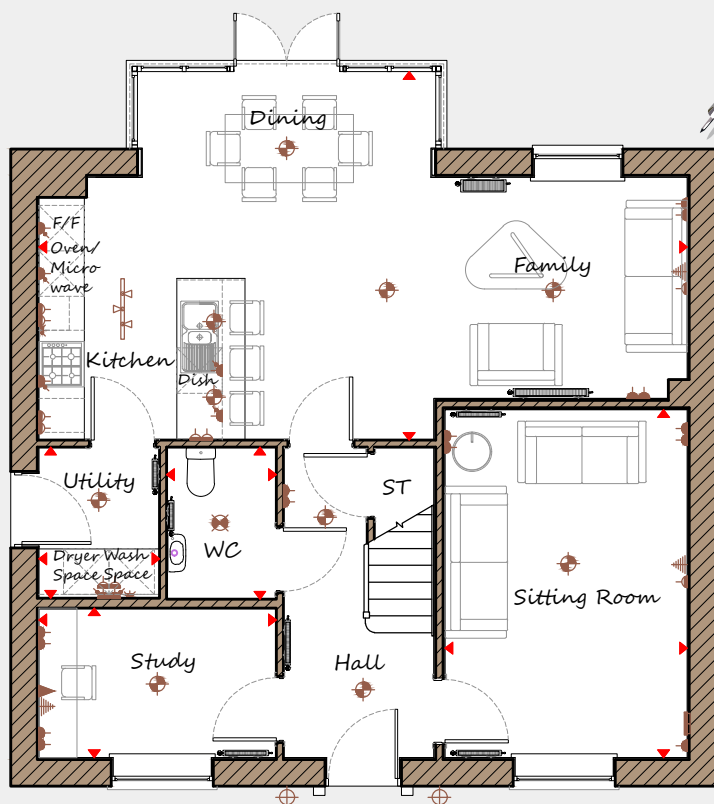
An exclusive opportunity to own
a desirable new property that
provides comfortable living with
craftsmanship of the highest calibre.

DH485G-4
[1492]
Rev C01



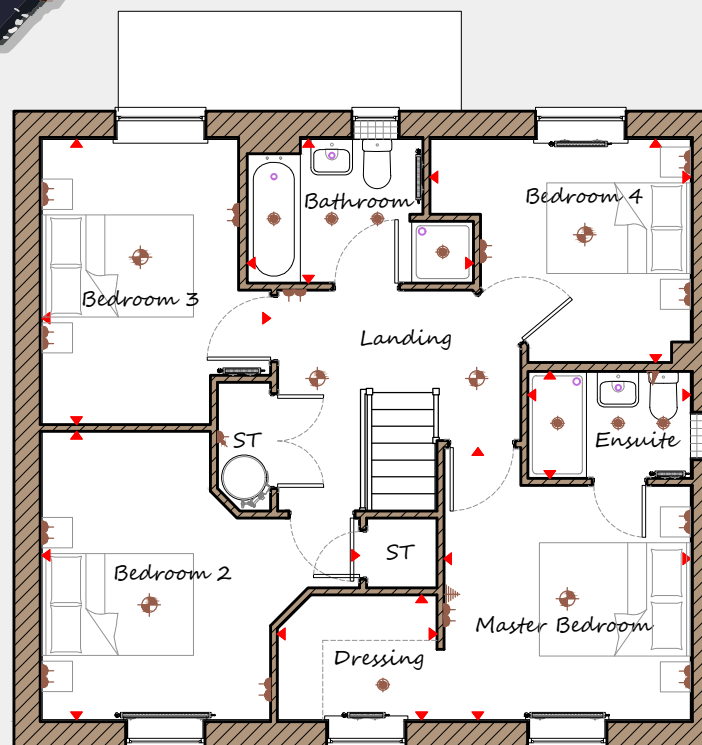
DAVIDSONS
HOMES

THE
WHITTINGTON
FLOOR PLANS



Ground Floor

Sitting Room	3205 x 4650	10'6" x 15'1"
Kitchen/Family/Dining	8575 x 4875	28'2" x 16'0"
Utility	1595 x 1995	5'3" x 6'7"
Study	3140 x 1980	10'4" x 6'6"
WC	1450 x 2010	4'9" x 6'7"



First Floor

Master Bedroom	3260 x 3600	10'8" x 11'10"
Dressing	2150 x 1415	7'9" x 4'8"
Ensuite	2110 x 1650	6'11" x 5'5"
Bedroom 2	4200 x 3815	13'9" x 12'6"
Bedroom 3	3020 x 3770	9'11" x 12'4"
Bedroom 4	3445 x 2950	11'4" x 9'8"
Bathroom	2990 x 1900	9'10" x 6'3"

Key

Dimension location	External light	Ceiling light	Downlight
3 bar light	Radiator	TV aerial	Media plate
Double socket	High double socket	Low socket	High socket

This is an artistic interpretation, variations in elevational styles, finishes and floor plans may vary. Please consult with your Sales Manager for details of the development and plot. Measurements provided are within + or - 50mm.



Davidsons Homes.
Wilson House, Leicester Road,
Ibstock, Leicestershire, LE67 6HP
T: 01530 261 444
www.davidsonsgroup.co.uk