

THE Hylton

5TH EDITION



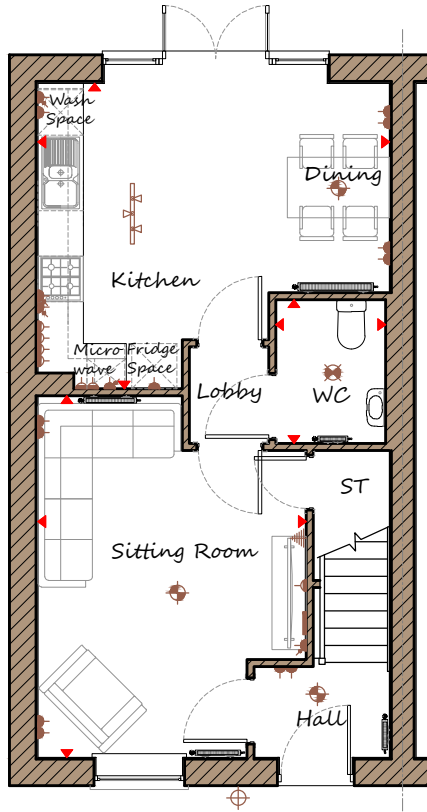
DAVIDSONS
HOMES



THREE BEDROOM
SEMI-DETACHED
HOME
906 sq'ft

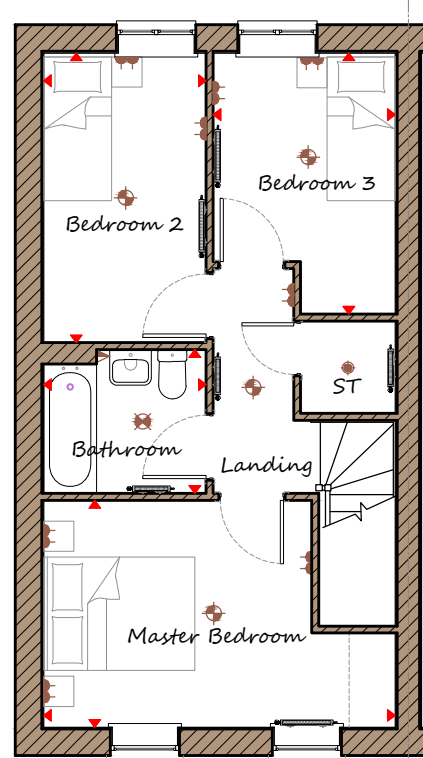
An exclusive opportunity
to own a desirable new property
that provides comfortable
living with craftsmanship of
the highest calibre.

www.davidsonshomes.co.uk



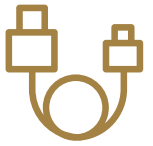
Ground Floor

Sitting Room	3545 x 4780	11'8" x 5'8"
Kitchen/Dining	4650 x 4040	15'3" x 13'3"
WC	1450 x 1900	4'9" x 6'3"



First Floor

Master Bedroom	4650 x 3000	15'3" x 9'10"
Bedroom 2	2150 x 3830	7'1" x 12'7"
Bedroom 3	2405 x 3450	7'11" x 11'4"
Bathroom	2000 x 2200	6'7" x 7'3"



TV point with pre-wired HDMI cabling



French doors lead to rear garden



Designer Sanitaryware



Ideal for first time buyers!

Key	Dimension location	External light	Ceiling light	Downlight	3 bar light	Radiator
	Double socket	High double socket	Low socket	High socket	TV aerial	Media plate

Note to customers. Information shown change at any time. Alterations and variations may occur during the build process. As such the design and dimensions may differ from what is shown. Dimensions should not be used for carpet or flooring sizes or items of furniture. Whilst we make every effort to ensure our information is kept up-to-date, there may be a delay in updating the drawing due to changes in Building Regulations / Planning / Sales Specification. Home purchasers are advised to check with the Sales Manager whether any alterations have been made. Computer generated image of the home is an artistic interpretation, variations in materials may differ from plot to plot such as brick finishes, render, roof tile colours, and paint finishes. Chimney's shown are plot specific, refer to development layout for homes with chimneys. Homes may be handed versions of the computer generated image. Company No: 4346861 | Davidsons Homes | Registered Office: Fishers Solicitors, Unit R Ivanhoe Business Park, Ashby de la Zouch, Leicestershire, LE65 2AB