

THE Appleby

5TH EDITION



DAVIDSONS
HOMES



TWO BEDROOM
SEMI-DETACHED
HOME
754 sq'ft

An exclusive opportunity
to own a desirable new property
that provides comfortable
living with craftsmanship of
the highest calibre.

www.davidsonshomes.co.uk



1 Double Bedroom



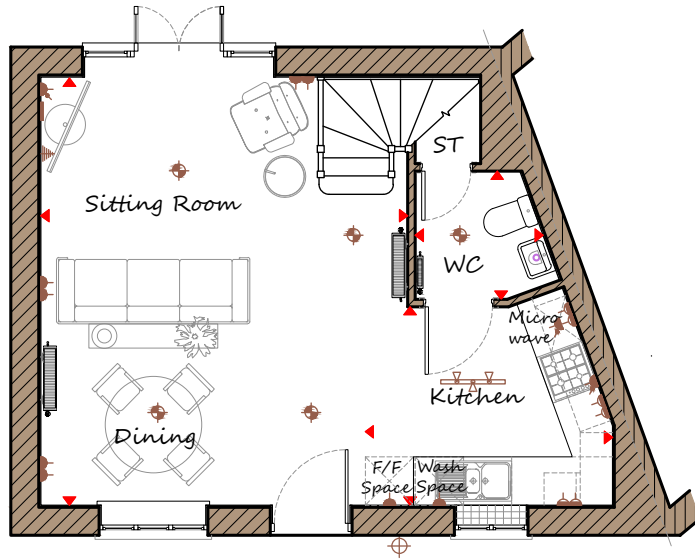
French doors lead to rear garden



TV point with pre-wired HDMI cabling

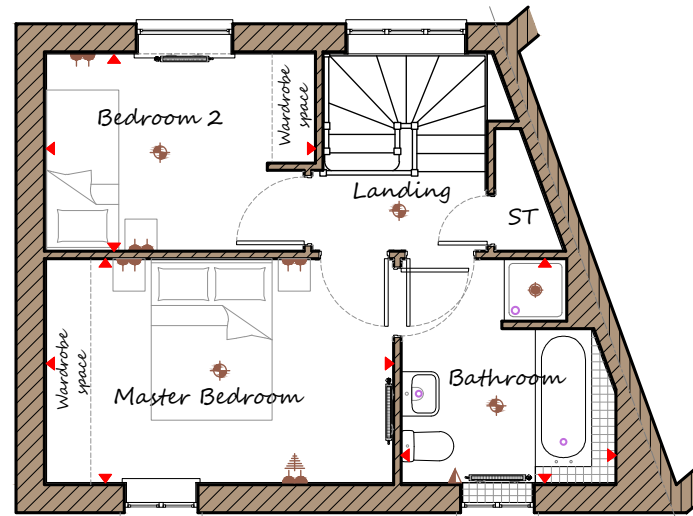


Ideal for first time buyers!



Ground Floor

Sitting Room/Dining	4555	x	5315	14'11"	x	17'5"
Kitchen	3070	x	2465	10'1"	x	8'1"
WC	1590	x	1590	5'3"	x	5'3"



First Floor

Master Bedroom	4305	x	2775	14'2"	x	9'1"
Bedroom 2	3340	x	2435	10'11"	x	8'0"
Bathroom	2665	x	2775	8'9"	x	9'1"

DH211BE-5 REV C03

Key	Dimension location		External light		Ceiling light		Downlight		3 bar light		Radiator	
	Double socket		High double socket		Low socket		High socket		TV aerial		Media plate	

CONSUMER CODE FOR HOME BUILDERS



Note to customers. Information shown change at any time. Alterations and variations may occur during the build process. As such the design and dimensions may differ from what is shown. Dimensions should not be used for carpet or flooring sizes or items of furniture. Whilst we make every effort to ensure our information is kept up-to-date, there may be a delay in updating the drawing due to changes in Building Regulations / Planning / Sales Specification. Home purchasers are advised to check with the Sales Manager whether any alterations have been made. Computer generated image of the home is an artistic interpretation, variations in materials may differ from plot to plot such as brick finishes, render, roof tile colours, and paint finishes. Chimney's shown are plot specific, refer to development layout for homes with chimneys. Homes may be handed versions of the computer generated image. Company No: 4346861 | Davidsons Homes | Registered Office: Fishers Solicitors, Unit R Ivanhoe Business Park, Ashby de la Zouch, Leicestershire, LE65 2AB