

THE Whittington

5TH EDITION



www.davidsonshomes.co.uk



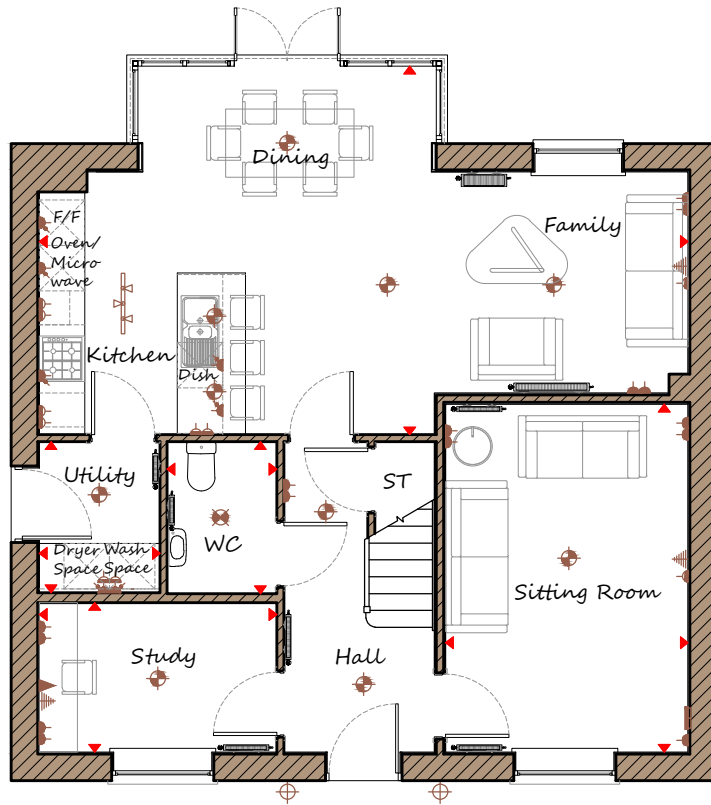
DAVIDSONS
HOMES



FOUR BEDROOM
DETACHED HOME

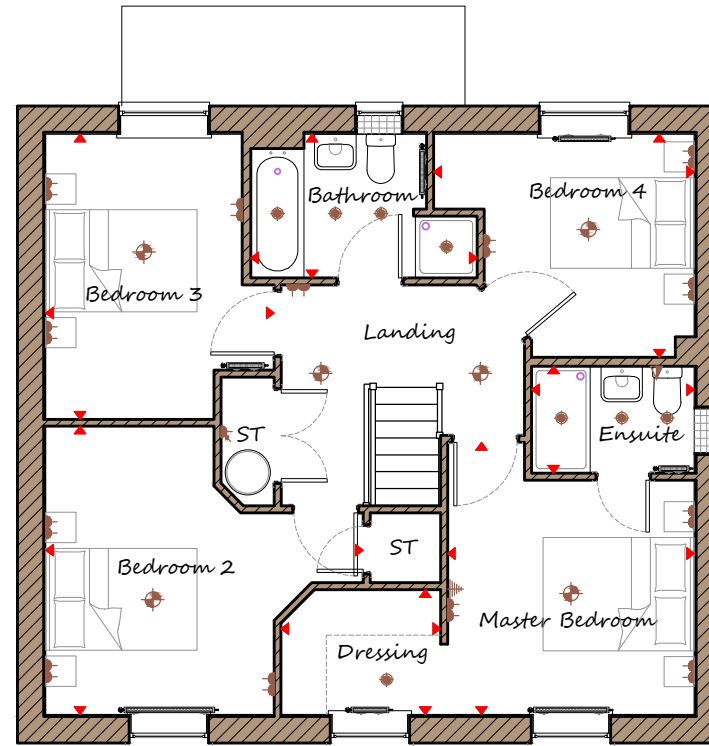
1492 sq'ft

An exclusive opportunity
to own a desirable new property
that provides comfortable
living with craftsmanship of
the highest calibre.



Ground Floor

Sitting Room	3205	x	4650	10'6"	x	15'1"
Kitchen/Family/Dining	8575	x	4875	28'2"	x	16'0"
Utility	1595	x	1995	5'3"	x	6'7"
Study	3140	x	1980	10'4"	x	6'6"
WC	1450	x	2010	4'9"	x	6'7"



First Floor

Master Bedroom	3260	x	3600	10'8"	x	11'10"
Dressing	2110	x	1650	6'11"	x	5'5"
Ensuite	2150	x	1415	7'9"	x	4'8"
Bedroom 2	4200	x	3815	13'9"	x	12'6"
Bedroom 3	3020	x	3770	9'11"	x	12'4"
Bedroom 4	3445	x	2950	11'4"	x	9'8"
Bathroom	2990	x	1900	9'10"	x	6'3"


4 Double Bedrooms


Open Plan Kitchen/
Dining/Family Area


Separate Study


Ideal family home

DH485GH-5 REV C03

Key

Dimension location 	External light 	Ceiling light 	Downlight 	3 bar light 	Radiator 
Double socket 	High double socket 	Low socket 	High socket 	TV aerial 	Media plate 

Note to customers. Information shown change at any time. Alterations and variations may occur during the build process. As such the design and dimensions may differ from what is shown. Dimensions should not be used for carpet or flooring sizes or items of furniture. Whilst we make every effort to ensure our information is kept up-to-date, there may be a delay in updating the drawing due to changes in Building Regulations / Planning / Sales Specification. Home purchasers are advised to check with the Sales Manager whether any alterations have been made. Computer generated image of the home is an artistic interpretation, variations in materials may differ from plot to plot such as brick finishes, render, roof tile colours, and paint finishes. Chimney's shown are plot specific, refer to development layout for homes with chimneys. Homes may be handed versions of the computer generated image. Company No: 4346861 | Davidsons Homes | Registered Office: Fishers Solicitors, Unit R Ivanhoe Business Park, Ashby de la Zouch, Leicestershire, LE65 2AB