



DAVIDSONS  
HOMES

THE LYDFORD  
3 BEDROOM  
DETACHED  
HOME

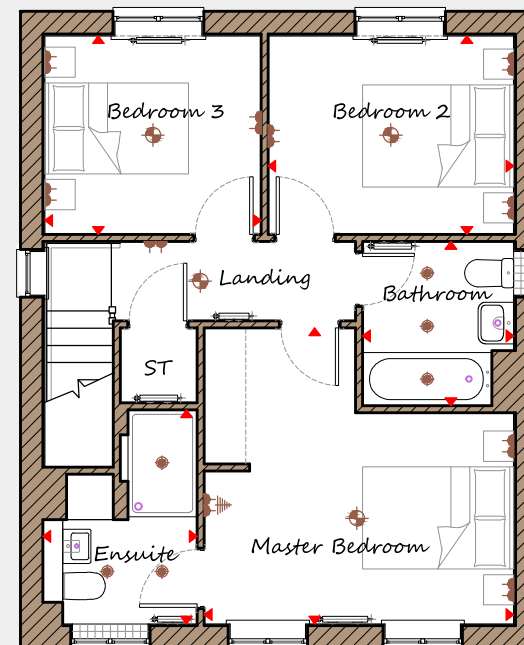
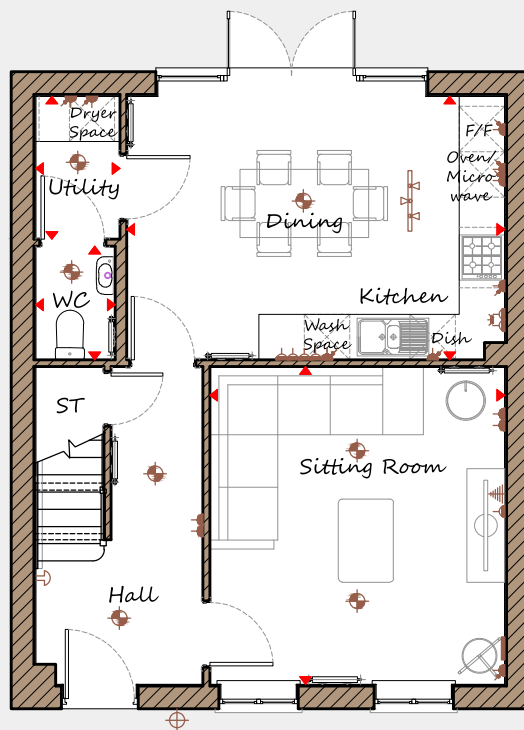
An exclusive opportunity to own  
a desirable new property that  
provides comfortable living with  
craftsmanship of the highest calibre.

DH390R-4  
[1053]  
Rev C00A



# DAVIDSONS HOMES

## THE LYDFORD FLOOR PLANS



### Ground Floor

<b>Sitting Room / Dining</b>	3900	x	4200	12'10"	x	13'9"
<b>Kitchen</b>	4995	x	3485	16'5"	x	11'5"
<b>WC</b>	1050	x	1500	3'5"	x	4'11"

### First Floor

<b>Master Bedroom</b>	4090	x	3010	13'5"	x	9'10"
<b>Ensuite</b>	2020	x	2020	6'8"	x	6'8"
<b>Bedroom 2</b>	3645	x	2535	11'11"	x	8'4"
<b>Bedroom 3</b>	3075	x	2535	10'1"	x	8'4"
<b>Bathroom</b>	2580	x	2050	8'5"	x	6'9"

<b>Key</b>	Dimension location	External light	Ceiling light	Downlight
	3 bar light	Radiator	TV aerial	Media plate
	Double socket	High double socket	Low socket	High socket

This is an artistic interpretation, variations in elevational styles, finishes and floor plans may vary. Please consult with your Sales Manager for details of the development and plot. Measurements provided are within + or - 50mm.



Davidsons Homes.  
Wilson House, Leicester Road,  
Ibstock, Leicestershire, LE67 6HP  
T: 01530 261 444  
[www.davidsonsgroup.co.uk](http://www.davidsonsgroup.co.uk)