

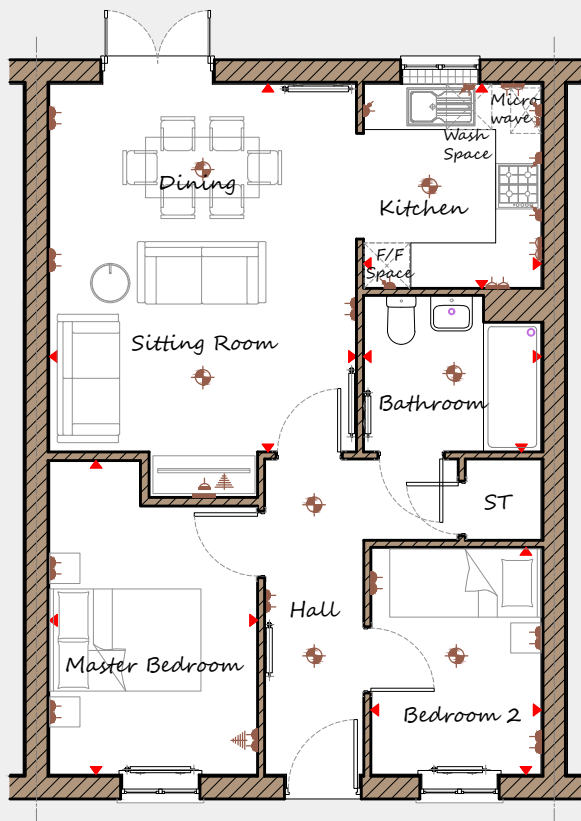


DAVIDSONS
HOMES

THE DALTON
2 BEDROOM
MID-TERRACE
HOME

An exclusive opportunity to own
a desirable new property that
provides comfortable living with
craftsmanship of the highest calibre.

DB220BI-4
[647]
Rev C01



Ground Floor

Sitting Room / Dining	4055	x	4865	13'4"	x	15'11"
Kitchen	2350	x	2700	7'9"	x	8'10"
Master Bedroom	2750	x	4150	9'0"	x	13'7"
Bedroom 2	2250	x	3000	7'5"	x	9'10"
Bathroom	2350	x	2070	7'9"	x	6'10"

- Key**
- Dimension location
 - External light
 - Ceiling light
 - Downlight
 - 3 bar light
 - Radiator
 - TV aerial
 - Media plate
 - Double socket
 - High double socket
 - Low socket
 - High socket

This is an artistic interpretation, variations in elevational styles, finishes and floor plans may vary. Please consult with your Sales Manager for details of the development and plot. Measurements provided are within + or - 50mm.



**DAVIDSONS
HOMES**

**THE DALTON
FLOOR PLANS**



Davidsons Homes.
Wilson House, Leicester Road,
Ibstock, Leicestershire, LE67 6HP
T: 01530 261 444
www.davidsonsgroup.co.uk