



DAVIDSONS
HOMES

THE DORSET
3 BEDROOM
LINKED-TERRACED
HOME

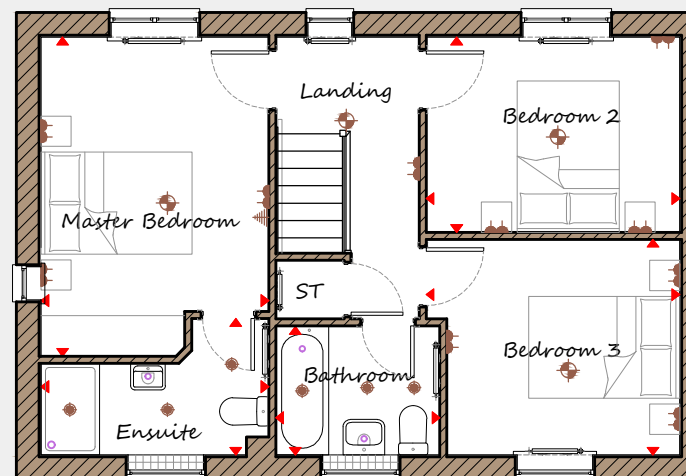
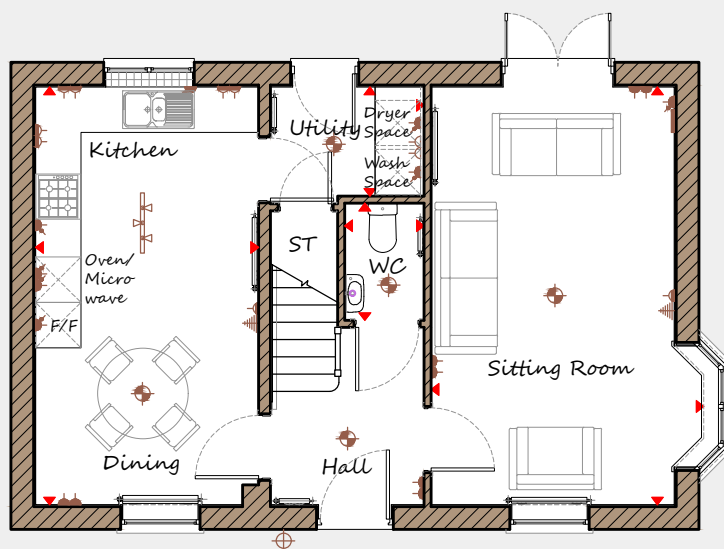
An exclusive opportunity to own
a desirable new property that
provides comfortable living with
craftsmanship of the highest calibre.

DH314GB-4
Plot 275
[1025]
Rev C01



DAVIDSONS HOMES

THE DORSET FLOOR PLANS



Ground Floor

Sitting Room	3605	x	5530	11'10"	x	18'2"
Kitchen / Dining	2950	x	5530	9'8"	x	18'2"
Utility	2035	x	1445	6'8"	x	4'9"
WC	1050	x	1550	3'5"	x	5'1"

First Floor

Master Bedroom	3015	x	4220	9'11"	x	13'10"
Ensuite	3015	x	1805	9'11"	x	5'11"
Bedroom 2	3355	x	2580	11'0"	x	8'6"
Bedroom 3	3355	x	2855	11'0"	x	9'4"
Bathroom	2170	x	1700	7'1"	x	5'7"

Key

Dimension location	External light	Ceiling light	Downlight
3 bar light	Radiator	TV aerial	Media plate
Double socket	High double socket	Low socket	High socket

This is an artistic interpretation, variations in elevational styles, finishes and floor plans may vary. Please consult with your Sales Manager for details of the development and plot. Measurements provided are within + or - 50mm.



Davidsons Homes.
Wilson House, Leicester Road,
Ibstock, Leicestershire, LE67 6HP
T: 01530 261 444
www.davidsonsgroup.co.uk