



DAVIDSONS
HOMES

THE HUTTON
3 BEDROOM
DETACHED
HOME

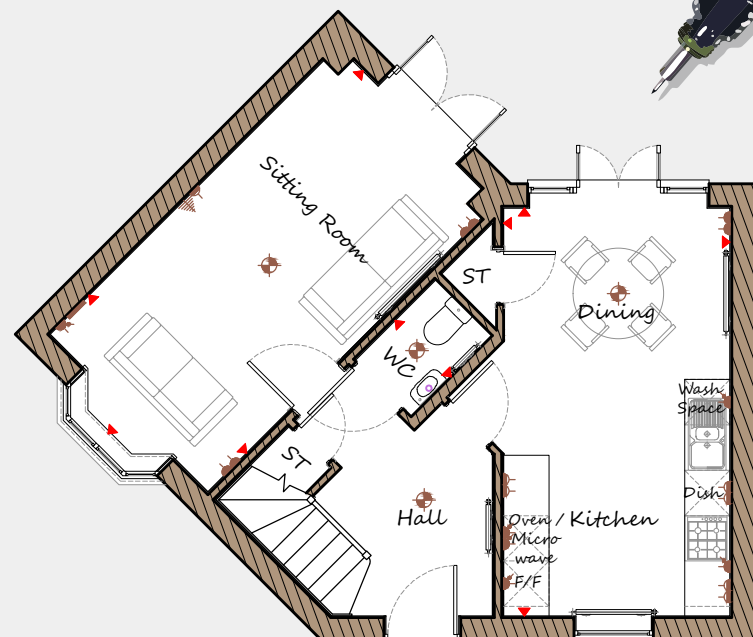
An exclusive opportunity to own
a desirable new property that
provides comfortable living with
craftsmanship of the highest calibre.

DH312G-4 OP
[983]
Rev C01B



DAVIDSONS HOMES

THE HUTTON FLOOR PLANS



Ground Floor

Sitting Room	2950	x	5805	9'8"	x	19'1"
Kitchen / Dining	2995	x	5390	9'10"	x	17'8"
WC	1050	x	1520	3'5"	x	5'0"

First Floor

Master Bedroom	2985	x	3080	9'10"	x	10'1"
Ensuite	1765	x	2220	5'9"	x	7'3"
Bedroom 2	3270	x	3480	10'9"	x	11'5"
Bedroom 3	3270	x	2415	10'9"	x	7'11"
Bathroom	2780	x	1865	9'1"	x	6'1"

Key	Dimension location	External light	Ceiling light	Downlight
	3 bar light	Radiator	TV aerial	Media plate
	Double socket	High double socket	Low socket	High socket

This is an artistic interpretation, variations in elevational styles, finishes and floor plans may vary. Please consult with your Sales Manager for details of the development and plot. Measurements provided are within + or - 50mm.



Davidsons Homes.
Wilson House, Leicester Road,
Ibstock, Leicestershire, LE67 6HP
T: 01530 261 444
www.davidsonsgroup.co.uk