



DAVIDSONS  
HOMES

THE ASHBY  
3 BEDROOM  
DETACHED  
HOME

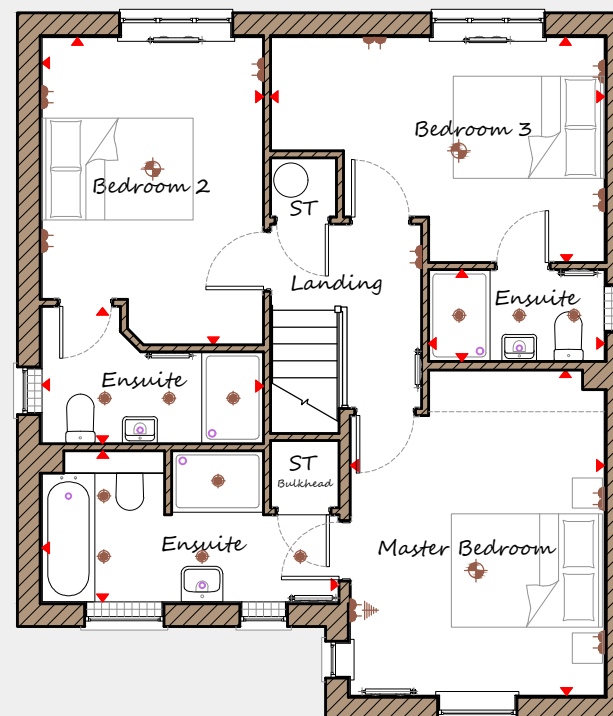
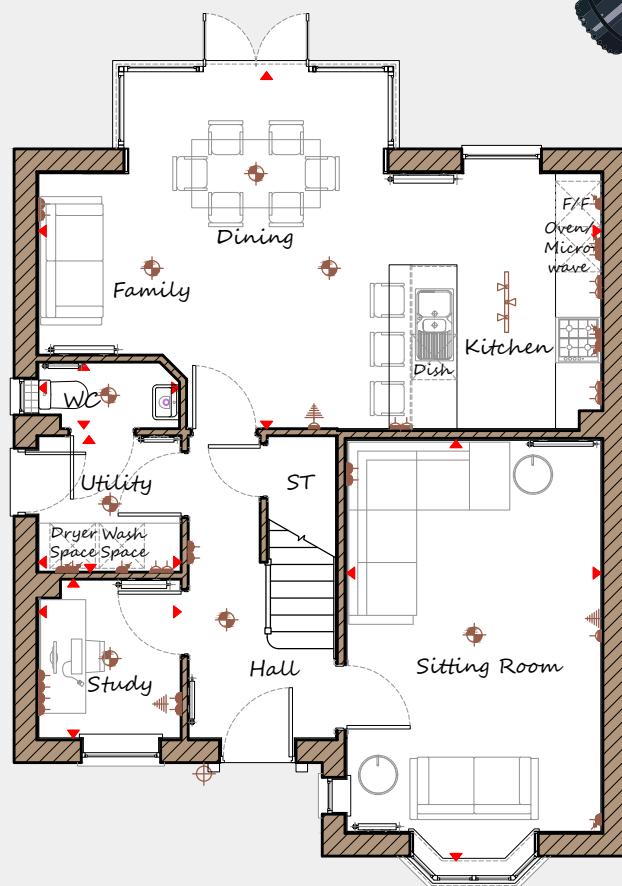
An exclusive opportunity to own  
a desirable new property that  
provides comfortable living with  
craftsmanship of the highest calibre.

DH327B-4  
[1357]  
Rev C01



# DAVIDSONS HOMES

## THE ASHBY FLOOR PLANS



### Ground Floor

|                              |             |               |
|------------------------------|-------------|---------------|
| <b>Sitting Room</b>          | 3360 x 5565 | 11'0" x 18'3" |
| <b>Kitchen/Family/Dining</b> | 7440 x 4725 | 24'5" x 15'6" |
| <b>Utility</b>               | 1885 x 1805 | 6'2" x 5'11"  |
| <b>Study</b>                 | 1885 x 2100 | 6'2" x 6'11"  |
| <b>WC</b>                    | 1885 x 875  | 6'1" x 2'10"  |

### First Floor

|                       |             |               |
|-----------------------|-------------|---------------|
| <b>Master Bedroom</b> | 3360 x 4300 | 10'0" x 14'1" |
| <b>Ensuite</b>        | 3930 x 2000 | 12'11" x 6'7" |
| <b>Bedroom 2</b>      | 2930 x 4065 | 9'7" x 18'4"  |
| <b>Ensuite</b>        | 2930 x 1815 | 9'7" x 5'11"  |
| <b>Bedroom 3</b>      | 4415 x 2975 | 14'6" x 9'9"  |
| <b>Ensuite</b>        | 2325 x 1215 | 7'8" x 4'0"   |

|               |                    |                |               |           |
|---------------|--------------------|----------------|---------------|-----------|
| <b>Key</b>    | Dimension location | External light | Ceiling light | Downlight |
| 3 bar light   | Radiator           | TV aerial      | Media plate   |           |
| Double socket | High double socket | Low socket     | High socket   |           |

This is an artistic interpretation, variations in elevational styles, finishes and floor plans may vary. Please consult with your Sales Manager for details of the development and plot. Measurements provided are within + or - 50mm.



Davidsons Homes.  
Wilson House, Leicester Road,  
Ibstock, Leicestershire, LE67 6HP  
T: 01530 261 444  
[www.davidsonsgroup.co.uk](http://www.davidsonsgroup.co.uk)