



**DAVIDSONS
HOMES**

**THE THORNTON
3 BEDROOM
MID-TERRACE
HOME**

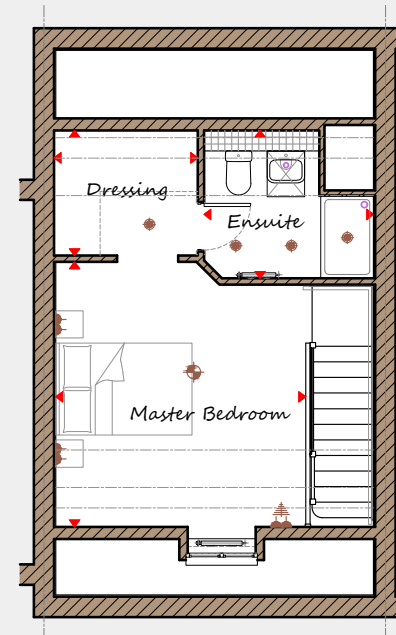
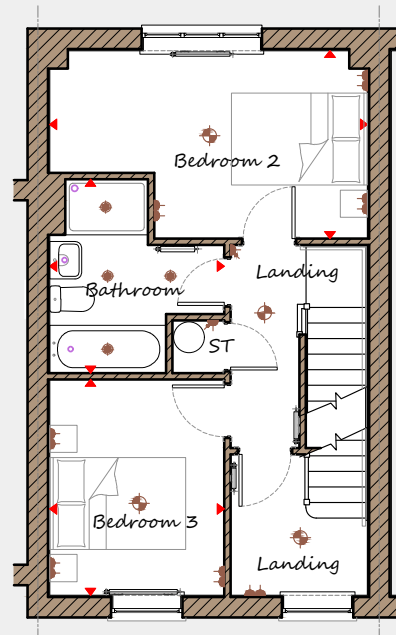
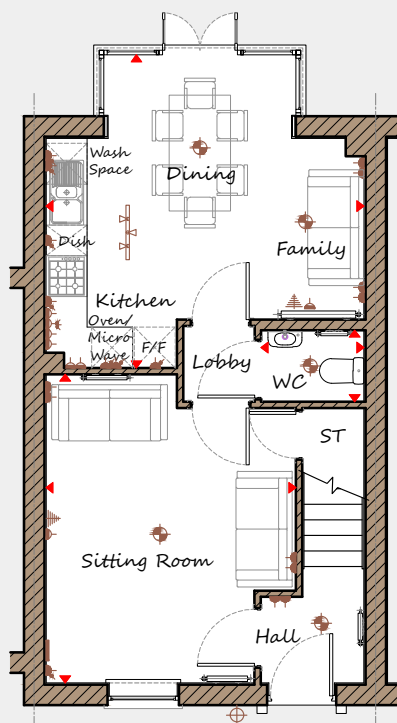
An exclusive opportunity to own
a desirable new property that
provides comfortable living with
craftsmanship of the highest calibre.

**DH301GTE-4
[1141]
Rev C03**



DAVIDSONS HOMES

THE THORNTON FLOOR PLANS



Ground Floor

Sitting Room	3670 x 4535	12'1" x 14'11"
Kitchen/Family/Dining	4670 x 4600	15'4" x 15'1"
WC	1510 x 1050	4'11" x 3'5"

First Floor

Bedroom 2	4670 x 2760	15'4" x 9'1"
Bedroom 3	2565 x 3175	8'5" x 10'5"
Bathroom	2565 x 2845	8'5" x 9'4"

Second Floor

Master Bedroom	3675 x 3895	12'1" x 12'9"
Dressing	2110 x 1840	6'11" x 6'0"
Ensuite	2495 x 2175	8'2" x 6'2"

Key

Dimension location	External light	Ceiling light	Downlight
3 bar light	Radiator	TV aerial	Media plate
Double socket	High double socket	Low socket	High socket

This is an artistic interpretation, variations in elevational styles, finishes and floor plans may vary. Please consult with your Sales Manager for details of the development and plot. Measurements provided are within + or - 50mm.



Davidsons Homes.
Wilson House, Leicester Road,
Ilbstock, Leicestershire, LE67 6HP
T: 01530 261 444
www.davidsonsgroup.co.uk