



DAVIDSONS
HOMES

THE SOMERTON
4 BEDROOM
DETACHED
HOME

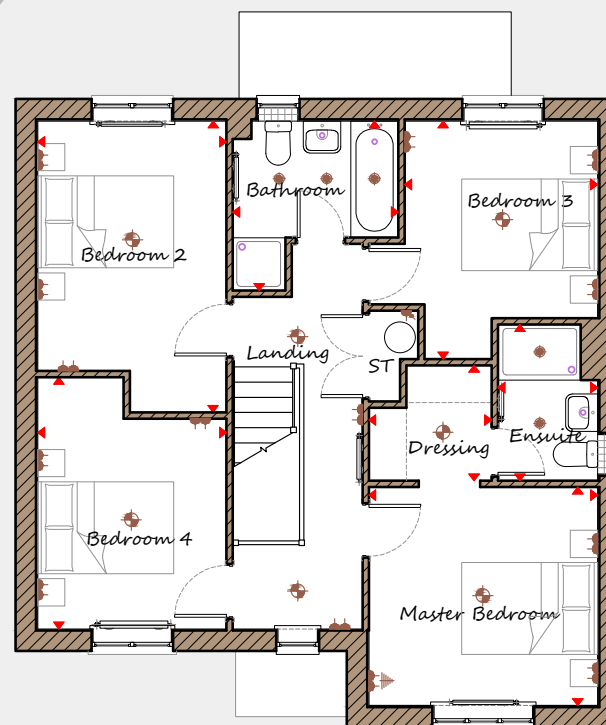
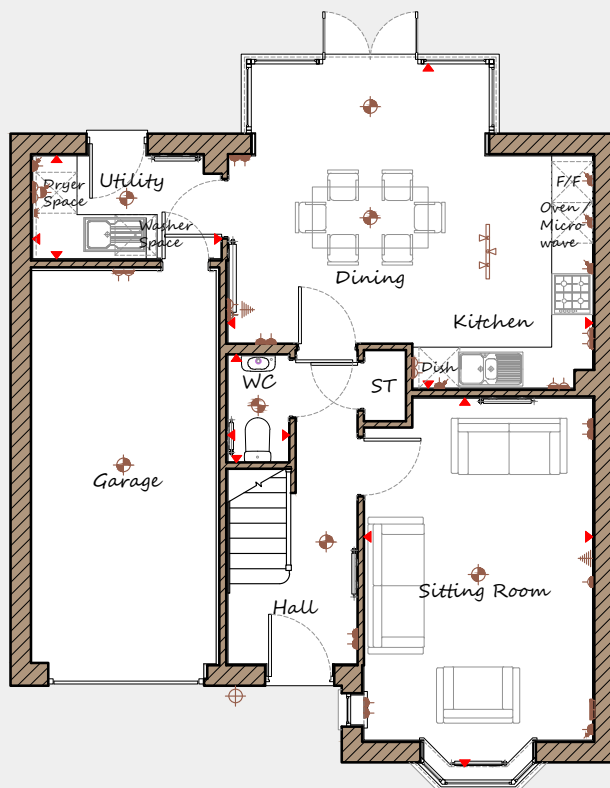
An exclusive opportunity to own
a desirable new property that
provides comfortable living with
craftsmanship of the highest calibre.

DH419B-4
[1292]
Rev C05



DAVIDSONS HOMES

THE SOMERTON FLOOR PLANS



Ground Floor

Sitting Room	3360	x	5415	11'0"	x	17'9"
Kitchen/Dining	5360	x	4760	17'7"	x	15'7"
Utility	2775	x	1515	9'1"	x	5'0"
WC	905	x	1585	3'0"	x	5'2"

First Floor

Master Bedroom	3360	x	3210	11'0"	x	10'6"
Ensuite	1450	x	2295	4'9"	x	7'6"
Dressing	1805	x	1695	5'11"	x	5'7"
Bedroom 2	2775	x	4280	9'1"	x	14'1"
Bedroom 3	2835	x	3500	9'4"	x	11'6"
Bedroom 4	2775	x	3700	9'1"	x	12'2"
Bathroom	2435	x	2490	8'0"	x	8'2"

Key	Dimension location	External light	Ceiling light	Downlight
	3 bar light	Radiator	TV aerial	Media plate
	Double socket	High double socket	Low socket	High socket

This is an artistic interpretation, variations in elevational styles, finishes and floor plans may vary. Please consult with your Sales Manager for details of the development and plot. Measurements provided are within + or - 50mm.



Davidsons Homes.
Wilson House, Leicester Road,
Ibstock, Leicestershire, LE67 6HP
T: 01530 261 444
www.davidsonsgroup.co.uk