



DAVIDSONS
HOMES

THE CHESTERFIELD
5 BEDROOM
DETACHED
HOME

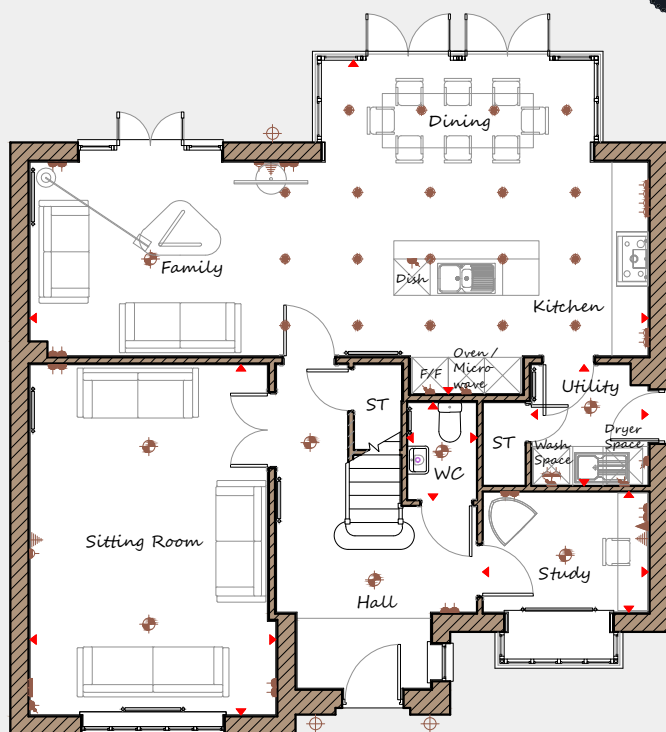
An exclusive opportunity to own
a desirable new property that
provides comfortable living with
craftsmanship of the highest calibre.

DH532R-4
[1917]
Rev C01



DAVIDSONS HOMES

THE CHESTERFIELD FLOOR PLANS



Ground Floor

Sitting Room	4065 x 5785	13'4" x 19'0"
Kitchen/Family/Dining	10220 x 5510	33'6" x 18'1"
Utility	1930 x 1975	6'4" x 6'6"
Study	2740 x 1995	9'0" x 6'7"
WC	1155 x 1610	3'9" x 5'3"

First Floor

Master Bedroom	4065 x 3360	13'4" x 11'0"
Dressing	1815 x 2315	5'11" x 7'7"
Ensuite	2155 x 1850	7'1" x 6'1"
Bedroom 2	3200 x 3745	10'6" x 12'3"
Bedroom 3	3985 x 2640	13'1" x 8'8"
Bedroom 4	3660 x 2650	12'0" x 8'8"
Bedroom 5	3150 x 2650	10'4" x 8'8"
Bathroom	2620 x 1965	8'7" x 6'5"

Key	Dimension location	External light	Ceiling light	Downlight
	3 bar light	Radiator	TV aerial	Media plate
	Double socket	High double socket	Low socket	High socket

This is an artistic interpretation, variations in elevational styles, finishes and floor plans may vary. Please consult with your Sales Manager for details of the development and plot. Measurements provided are within + or - 50mm.



Davidsons Homes.
Wilson House, Leicester Road,
Ibstock, Leicestershire, LE67 6HP
T: 01530 261 444
www.davidsonsgroup.co.uk