



**DAVIDSONS
HOMES**

**THE THORNTON
3 BEDROOM
SEMI-DETACHED
HOME**

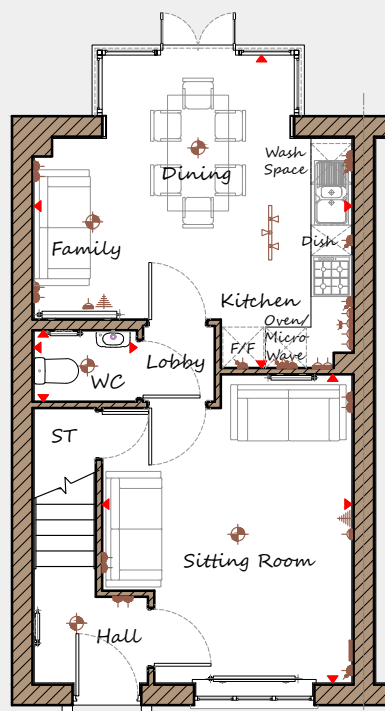
An exclusive opportunity to own
a desirable new property that
provides comfortable living with
craftsmanship of the highest calibre.

**DH301MHB-4
[1141]
Rev C02C**



DAVIDSONS HOMES

THE THORNTON FLOOR PLANS

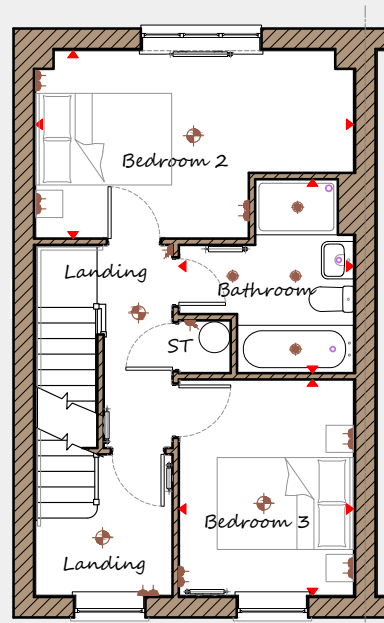


Ground Floor

Sitting Room	3670 x 4535	12'1" x 14'11"
Kitchen/Family/Dining	4670 x 4600	15'4" x 15'1"
WC	1510 x 1050	4'11" x 3'5"

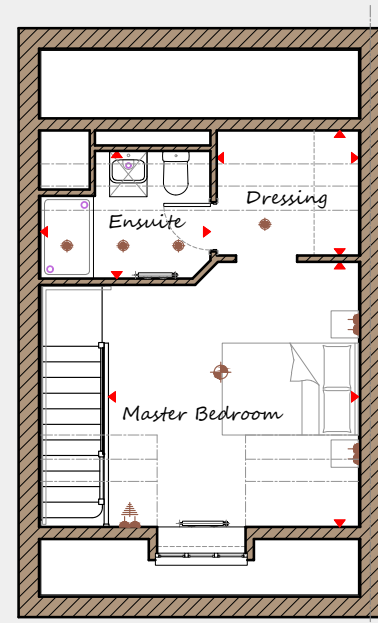
Second Floor

Master Bedroom	3675 x 3895	12'1" x 12'9"
Dressing	2085 x 1825	6'10" x 6'0"
Ensuite	2495 x 1875	8'2" x 6'2"



First Floor

Bedroom 2	4670 x 2760	15'4" x 9'1"
Bedroom 3	2565 x 3175	8'5" x 10'5"
Bathroom	2565 x 2845	8'5" x 9'4"



Key	Dimension location	External light	Ceiling light	Downlight
3 bar light	Radiator	TV aerial	Media plate	
Double socket	High double socket	Low socket	High socket	

This is an artistic interpretation, variations in elevational styles, finishes and floor plans may vary. Please consult with your Sales Manager for details of the development and plot. Measurements provided are within + or - 50mm.



Davidsons Homes.
Wilson House, Leicester Road,
Ilbstock, Leicestershire, LE67 6HP
T: 01530 261 444
www.davidsonsgroup.co.uk