



DAVIDSONS
HOMES

THE WINCHESTER
4 BEDROOM
DETACHED
HOME

An exclusive opportunity to own
a desirable new property that
provides comfortable living with
craftsmanship of the highest calibre.

DH404G





DAVIDSONS HOMES

THE WINCHESTER FLOORPLANS



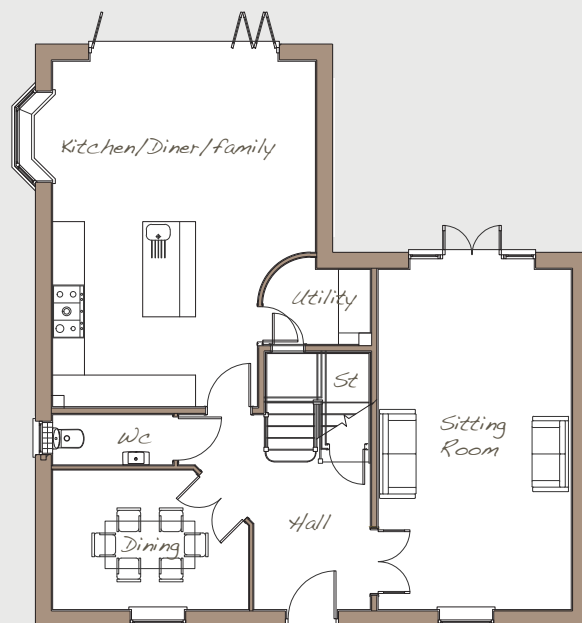
Davidsons Group.

Wilson House, Leicester Road,
Ilkeston, Leicestershire, LE67 6HP

T: 01530 261 444

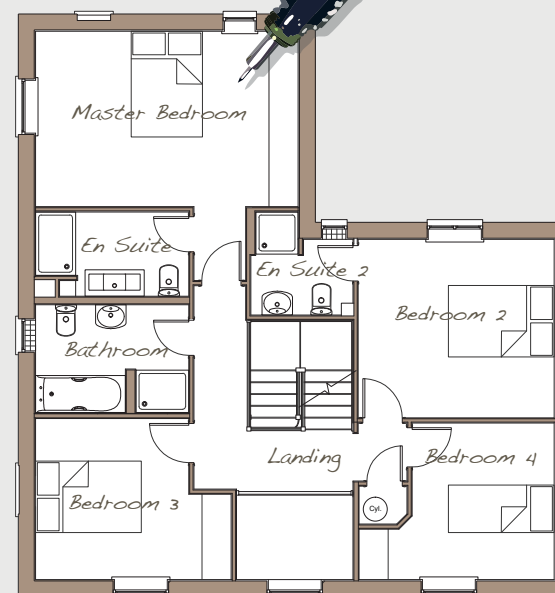
F: 01530 267 140

www.davidsonsgroup.co.uk



Ground Floor

Sitting Room	3645 x 6800	12'0" x 22'3"
Kitchen/Diner/Family	5310 x 6705	17'4" x 22'0"
Dining	3700 x 2630	12'1" x 8'6"
Utility	2030 x 1640	6'7" x 5'4"
WC	2270 x 945	7'4" x 3'1"



First Floor

Master Bedroom	4960 x 4710	16'3" x 15'5"
En Suite	2895 x 1590	9'5" x 5'2"
Bedroom 2	3702 x 3370	12'1" x 11'1"
En Suite 2	1925 x 1945	6'3" x 6'4"
Bedroom 3	3695 x 3040	12'1" x 10'0"
Bedroom 4	3680 x 2955	12'1" x 9'7"
Bathroom	2895 x 2035	9'5" x 6'7"

This is an artistic interpretation, therefore variations in finishes and exact layout may not be accurate. Please ask your Sales Manager for complete specifications. Images are for illustration purposes only. Please be aware that a tolerance of 50mm should be taken into consideration for plasterboard and brickwork. Measurements provided are maximum measurement information for the space.

With one of the **strongest heritages in building homes** we value style, efficiency, sustainability and quality. Principles that Albert Wilson established when he first started building in the first half of the last century and continued by David Wilson, his team and his family today. Davidsons Homes can be recognised not only by the "rose" insignia in each home but also by the pride that each of our home owners takes in their homes.