



# DAVIDSONS HOMES

## The Calshot

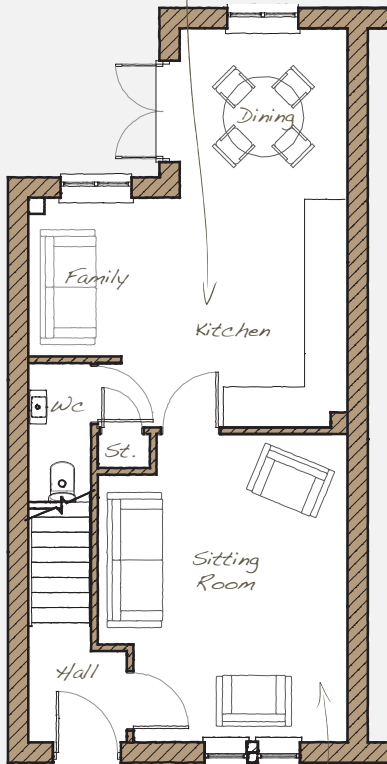
*3 bedroom semi detached home*

An exclusive opportunity to own a desirable new property that provides comfortable living with craftsmanship of the highest calibre

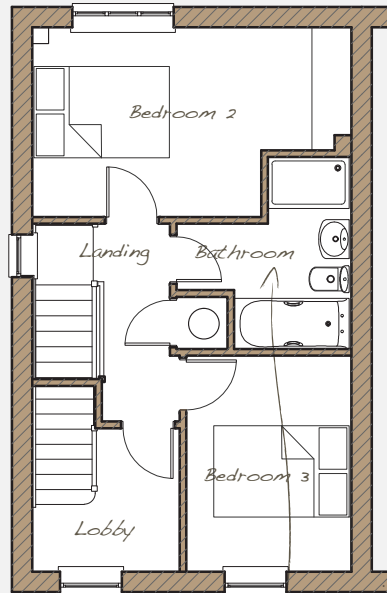
### DH304GE-2

With one of the **strongest heritages in building homes** we value style, efficiency, sustainability and quality. Principles that Albert Wilson established when he first started building in the first half of the last century and continued by David Wilson, his team and his family today. Davidsons homes can be recognised not only by the "rose" insignia in each home but also by the pride that each of our home owners takes in their homes.

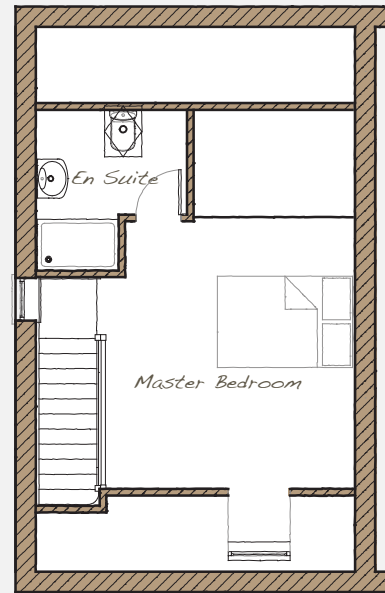
The kitchen is designed for fully integrated appliances; this flows to an eating area and then onto the garden through beautiful double doors.



This room is a perfectly proportioned living area



A stylish Roca bathroom suite



### Ground Floor



Sitting Room	3655	x	4530	12'0"	x	14'9"
Kitchen/Family	4655	x	3445	15'3"	x	11'3"
Dining Room	2790	x	2225	7'9"	x	7'3"

### First Floor



Bedroom 2	4655	x	2775	15'3"	x	9'1"
Bedroom 3	2405	x	3165	7'9"	x	10'4"
Lobby	2150	x	2095	7'1"	x	6'9"

### Second Floor



Master Bedroom	4655	x	6515	15'3"	x	21'4"
En Suite	2210	x	2375	7'3"	x	7'8"

\* Maximum measurement into space

This is an artistic interpretation, therefore variations in finishes and exact layout may not be accurate. Please ask your Sales Manager for complete specifications. Images are for illustration purposes only.

Please be aware that a tolerance of 50mm should be taken into consideration for plasterboard and brickwork. Measurements provided are maximum measurement information for the space.

### Davidsons Group

Wilson House, Leicester Road  
 Ibstock, Leicestershire.  
 LE67 6HP  
 Telephone **0845 099 5099**  
[www.davidsonsgroup.co.uk](http://www.davidsonsgroup.co.uk)

