

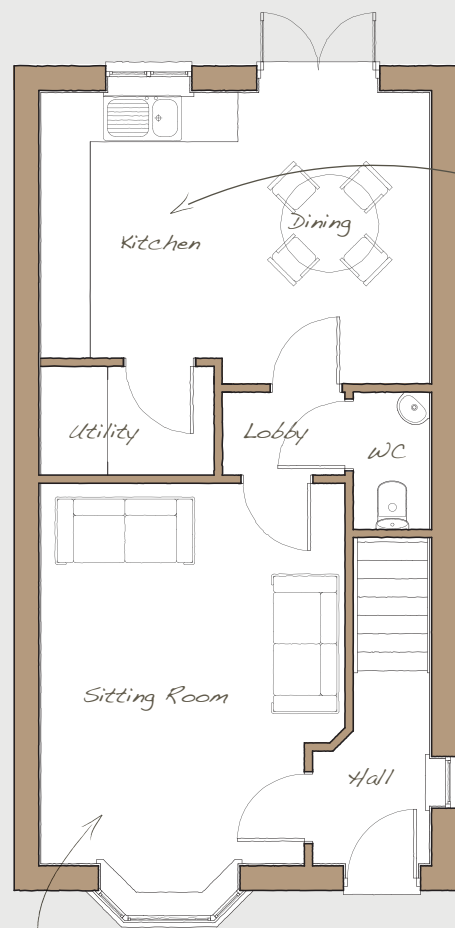


DAVIDSONS
HOMES

THE BEACON
3 BEDROOM
DETACHED
HOME

An exclusive opportunity to own
a desirable new property that
provides comfortable living with
craftsmanship of the highest calibre.

DH339G-2

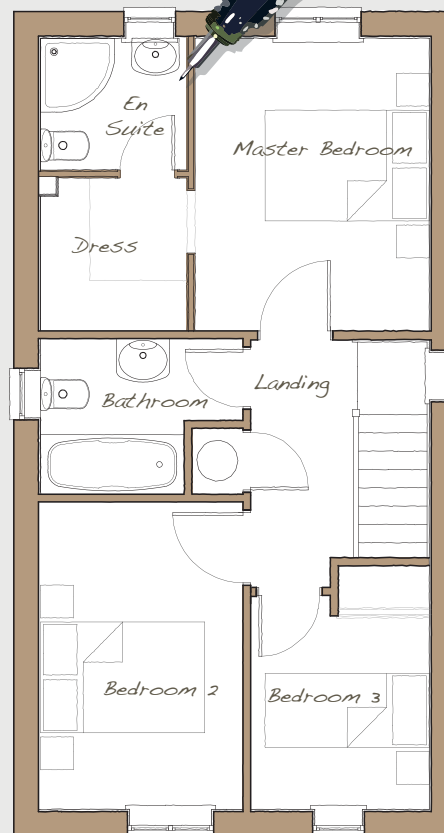


The kitchen flows to an eating area and then onto the garden through beautiful double doors.

This room is a perfectly proportioned living area.

Ground Floor

Kitchen/Dining	3575* x 4785*	11'8"* x 15'8"*
Utility	1342* x 2135*	4'4"* x 7'0"*
Sitting Room	4660* x 3775*	15'3"* x 12'4"*



First Floor

Master Bedroom	3602* x 2895*	11'9"* x 9'6"*
Bedroom 2	3785* x 2505	12'5"* x 8'2"
Bedroom 3	2400 x 2218*	7'10" x 7'3"*

*Maximum measurement into space



DAVIDSONS HOMES

THE BEACON FLOORPLANS



Davidsons Group.

Wilson House, Leicester Road,
Ilstock, Leicestershire, LE67 6HP

T: 01530 261 444

F: 01530 267 140

www.davidsonsgroup.co.uk

With one of the **strongest heritages in building homes** we value style, efficiency, sustainability and quality. Principles that Albert Wilson established when he first started building in the first half of the last century and continued by David Wilson, his team and his family today. Davidsons Homes can be recognised not only by the "rose" insignia in each home but also by the pride that each of our home owners takes in their homes.