



DAVIDSONS  
HOMES

THE STANBROOK  
3 BEDROOM  
DETACHED  
HOME

An exclusive opportunity to own  
a desirable new property that  
provides comfortable living with  
craftsmanship of the highest calibre.

DH320R-4  
[1053]  
Rev C02

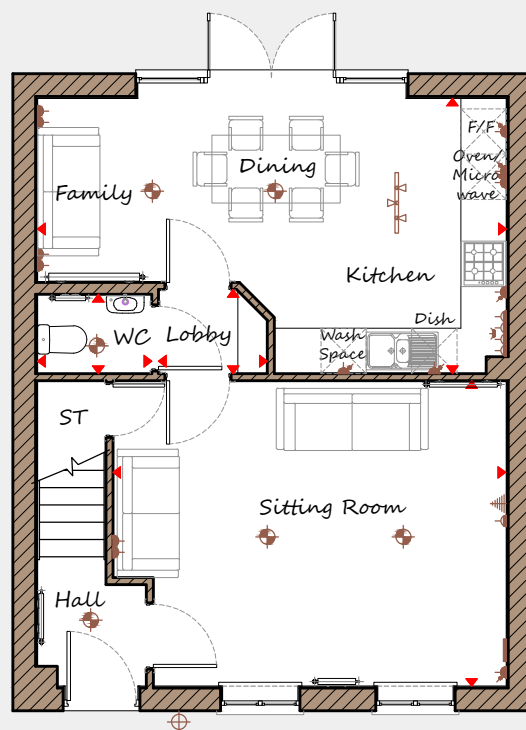


# DAVIDSONS HOMES

## THE STANBROOK FLOOR PLANS

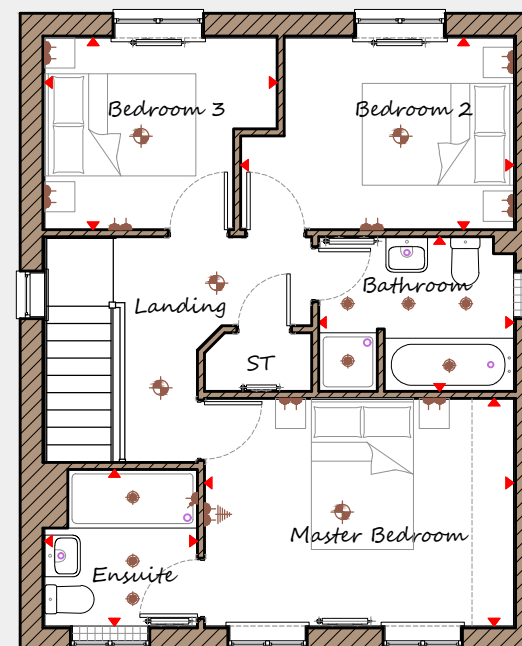


Davidsons Homes.  
Wilson House, Leicester Road,  
Ilkeston, Leicestershire, LE15 7HP  
T: 01530 261 444  
[www.davidsonsgroup.co.uk](http://www.davidsonsgroup.co.uk)



### Ground Floor

<b>Sitting Room</b>	5205	x	4040	17'1"	x	13'3"
<b>Kitchen/Family/Dining</b>	6205	x	3645	20'4"	x	11'1"
<b>WC</b>	1510	x	1050	4'11"	x	3'5"



### First Floor

<b>Master Bedroom</b>	4090	x	3010	13'5"	x	9'1"
<b>Ensuite</b>	2020	x	2070	6'8"	x	6'9"
<b>Bedroom 2</b>	3610	x	2535	11'10"	x	8'4"
<b>Bedroom 3</b>	3075	x	2535	10'1"	x	8'4"
<b>Bathroom</b>	2595	x	2045	8'6"	x	6'9"

<b>Key</b>	Dimension location	External light	Ceiling light	Downlight
3 bar light	Radiator	TV aerial	Media plate	
Double socket	High double socket	Low socket	High socket	

This is an artistic interpretation, variations in elevational styles, finishes and floor plans may vary. Please consult with your Sales Manager for details of the development and plot. Measurements provided are within + or - 50mm.