



DAVIDSONS  
HOMES

THE THORNTON  
3 BEDROOM  
SEMI-DETACHED  
HOME

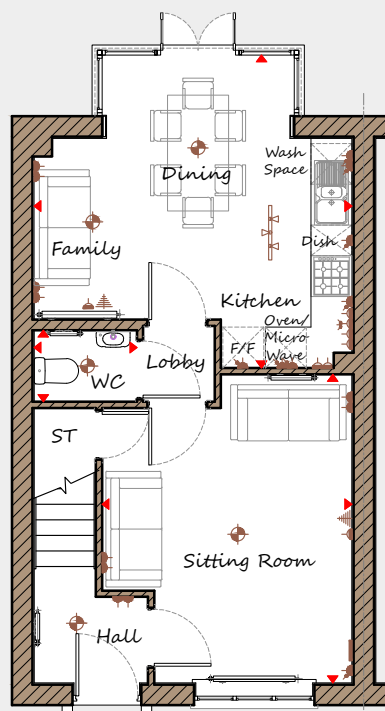
An exclusive opportunity to own  
a desirable new property that  
provides comfortable living with  
craftsmanship of the highest calibre.

DH301MHB-4  
[1141]  
Rev C02C



# DAVIDSONS HOMES

## THE THORNTON FLOOR PLANS

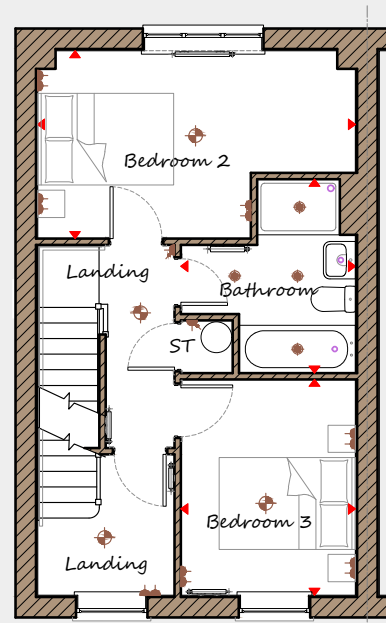


### Ground Floor

<b>Sitting Room</b>	3670 x 4535	12'1" x 14'11"
<b>Kitchen/Family/Dining</b>	4670 x 4600	15'4" x 15'1"
<b>WC</b>	1510 x 1050	4'11" x 3'5"

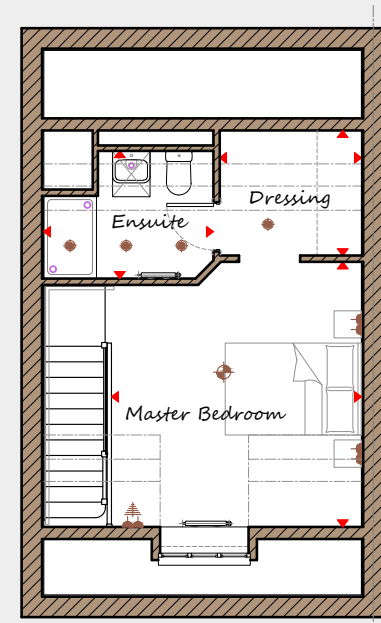
### Second Floor

<b>Master Bedroom</b>	3675 x 3895	12'1" x 12'9"
<b>Dressing</b>	2085 x 1825	6'10" x 6'0"
<b>Ensuite</b>	2495 x 1875	8'2" x 6'2"



### First Floor

<b>Bedroom 2</b>	4670 x 2760	15'4" x 9'1"
<b>Bedroom 3</b>	2565 x 3175	8'5" x 10'5"
<b>Bathroom</b>	2565 x 2845	8'5" x 9'4"



<b>Key</b>	Dimension location	External light	Ceiling light	Downlight
	3 bar light	Radiator	TV aerial	Media plate
	Double socket	High double socket	Low socket	High socket

This is an artistic interpretation, variations in elevational styles, finishes and floor plans may vary. Please consult with your Sales Manager for details of the development and plot. Measurements provided are within + or - 50mm.



Davidsons Homes.  
Wilson House, Leicester Road,  
Ilkeston, Leicestershire, LE67 6HP  
T: 01530 261 444  
[www.davidsonsgroup.co.uk](http://www.davidsonsgroup.co.uk)