



DAVIDSONS  
HOMES

THE CHESTERFIELD  
5 BEDROOM  
DETACHED  
HOME

An exclusive opportunity to own  
a desirable new property that  
provides comfortable living with  
craftsmanship of the highest calibre.

DH532R-4  
[1917]  
Rev C01



DAVIDSONS  
HOMES

## THE CHESTERFIELD FLOOR PLANS

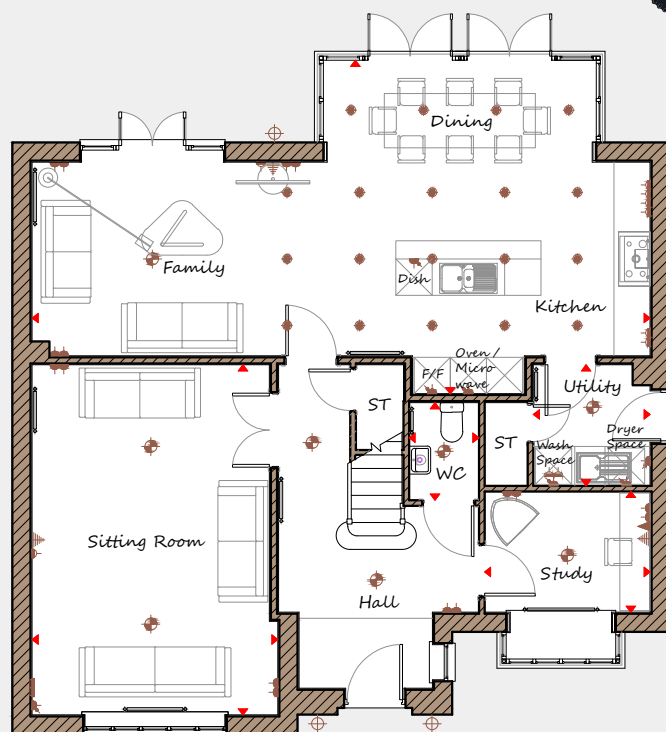


Davidsons Homes.

Wilson House, Leicester Road,  
Ilkeston, Leicestershire, LE15 7HP

T: 01530 261 444

[www.davidsonsgroup.co.uk](http://www.davidsonsgroup.co.uk)



### Ground Floor

<b>Sitting Room</b>	4065	x	5785	13'4"	x	19'0"
<b>Kitchen/Family/Dining</b>	10220	x	5510	33'6"	x	18'1"
<b>Utility</b>	1930	x	1975	6'4"	x	6'6"
<b>Study</b>	2740	x	1995	9'0"	x	6'7"
<b>WC</b>	1155	x	1610	3'9"	x	5'3"



### First Floor

<b>Master Bedroom</b>	4065	x	3360	13'4"	x	11'0"
<b>Dressing</b>	1815	x	2315	5'11"	x	7'7"
<b>Ensuite</b>	2155	x	1850	7'1"	x	6'1"
<b>Bedroom 2</b>	3200	x	3745	10'6"	x	12'3"
<b>Bedroom 3</b>	3985	x	2640	13'1"	x	8'8"
<b>Bedroom 4</b>	3660	x	2650	12'0"	x	8'8"
<b>Bedroom 5</b>	3150	x	2650	10'4"	x	8'8"
<b>Bathroom</b>	2620	x	1965	8'7"	x	6'5"

<b>Key</b>	Dimension location	External light	Ceiling light	Downlight
3 bar light	Radiator	TV aerial	Media plate	
Double socket	High double socket	Low socket	High socket	

This is an artistic interpretation, variations in elevational styles, finishes and floor plans may vary. Please consult with your Sales Manager for details of the development and plot. Measurements provided are within + or - 50mm.