



DAVIDSONS
HOMES

THE FORD
3 BEDROOM
DETACHED
HOME

An exclusive opportunity to own
a desirable new property that
provides comfortable living with
craftsmanship of the highest calibre.

DH313B-4
[1025]
Rev C00A

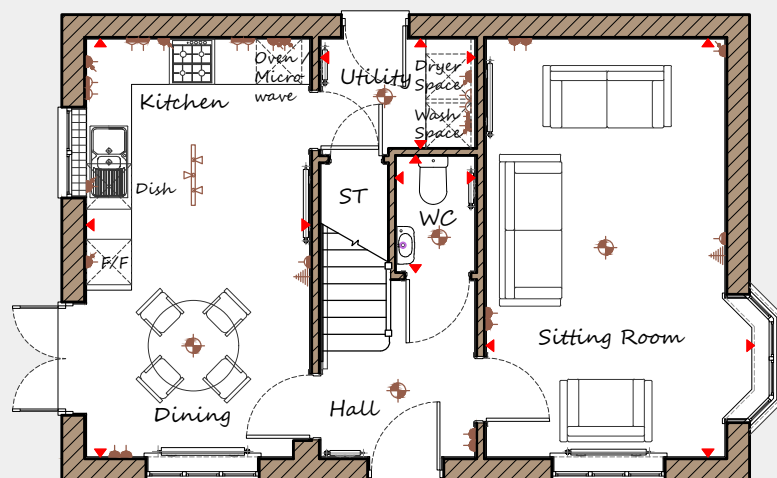


DAVIDSONS
HOMES

THE FORD FLOOR PLANS

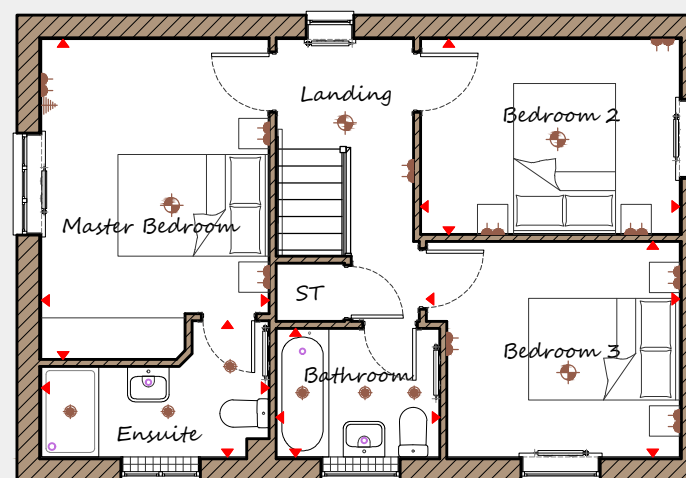


Davidsons Homes.
Wilson House, Leicester Road,
Ibstock, Leicestershire, LE67 6HP
T: 01530 261 444
www.davidsonsgroup.co.uk



Ground Floor

Sitting Room	3550	x	5530	11'8"	x	18'2"
Kitchen / Dining	2955	x	5530	9'8"	x	18'2"
Utility	2035	x	1445	6'8"	x	4'9"
WC	1050	x	1550	3'5"	x	5'1"



First Floor

Master Bedroom	3015	x	4235	9'11"	x	13'11"
Ensuite	3015	x	1805	9'11"	x	5'11"
Bedroom 2	3430	x	2580	11'3"	x	8'6"
Bedroom 3	3355	x	2855	11'0"	x	9'4"
Bathroom	2170	x	1700	7'1"	x	5'7"

Key	Dimension location	External light	Ceiling light	Downlight
	3 bar light	Radiator	TV aerial	Media plate
	Double socket	High double socket	Low socket	High socket

This is an artistic interpretation, variations in elevational styles, finishes and floor plans may vary. Please consult with your Sales Manager for details of the development and plot. Measurements provided are within + or - 50mm.